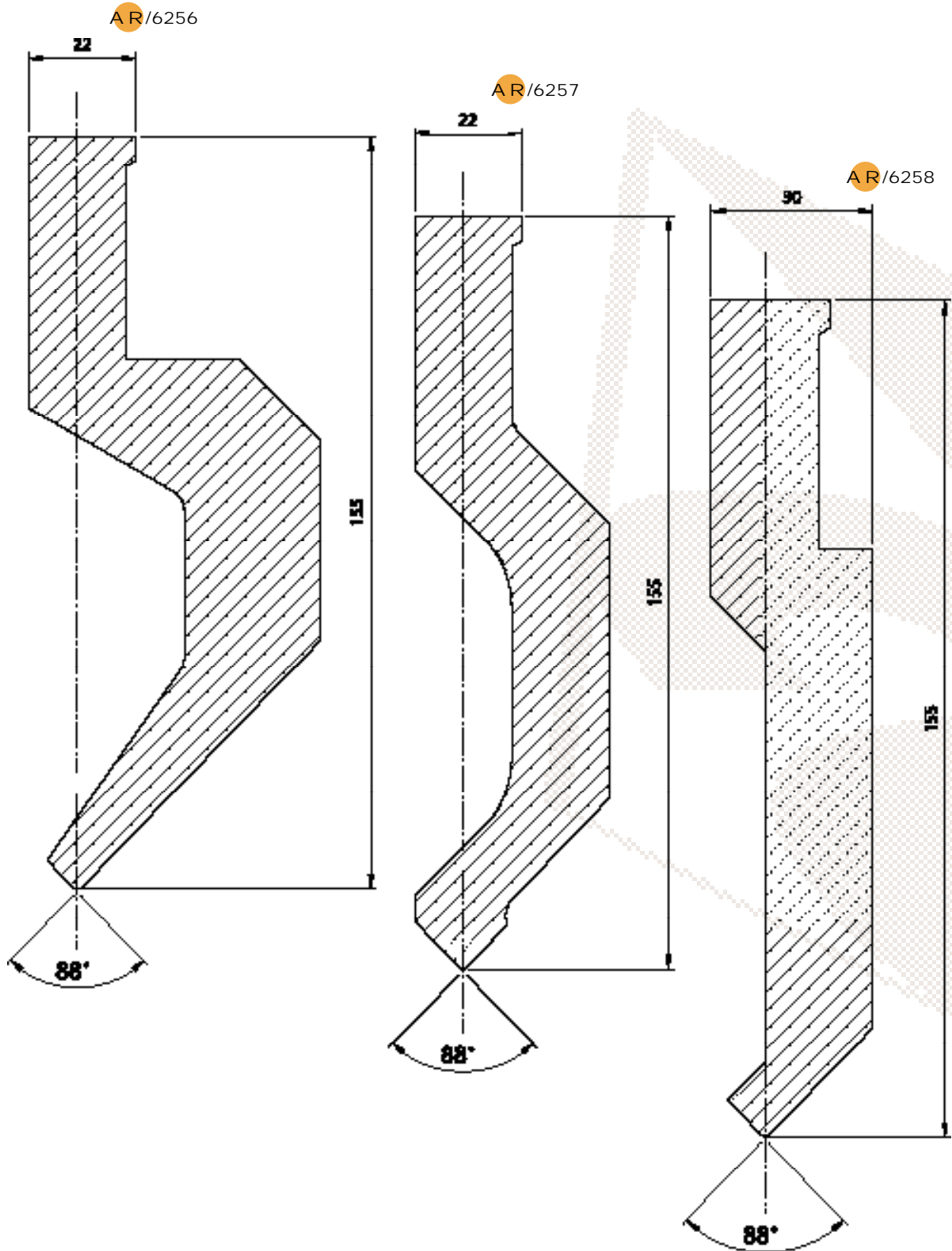
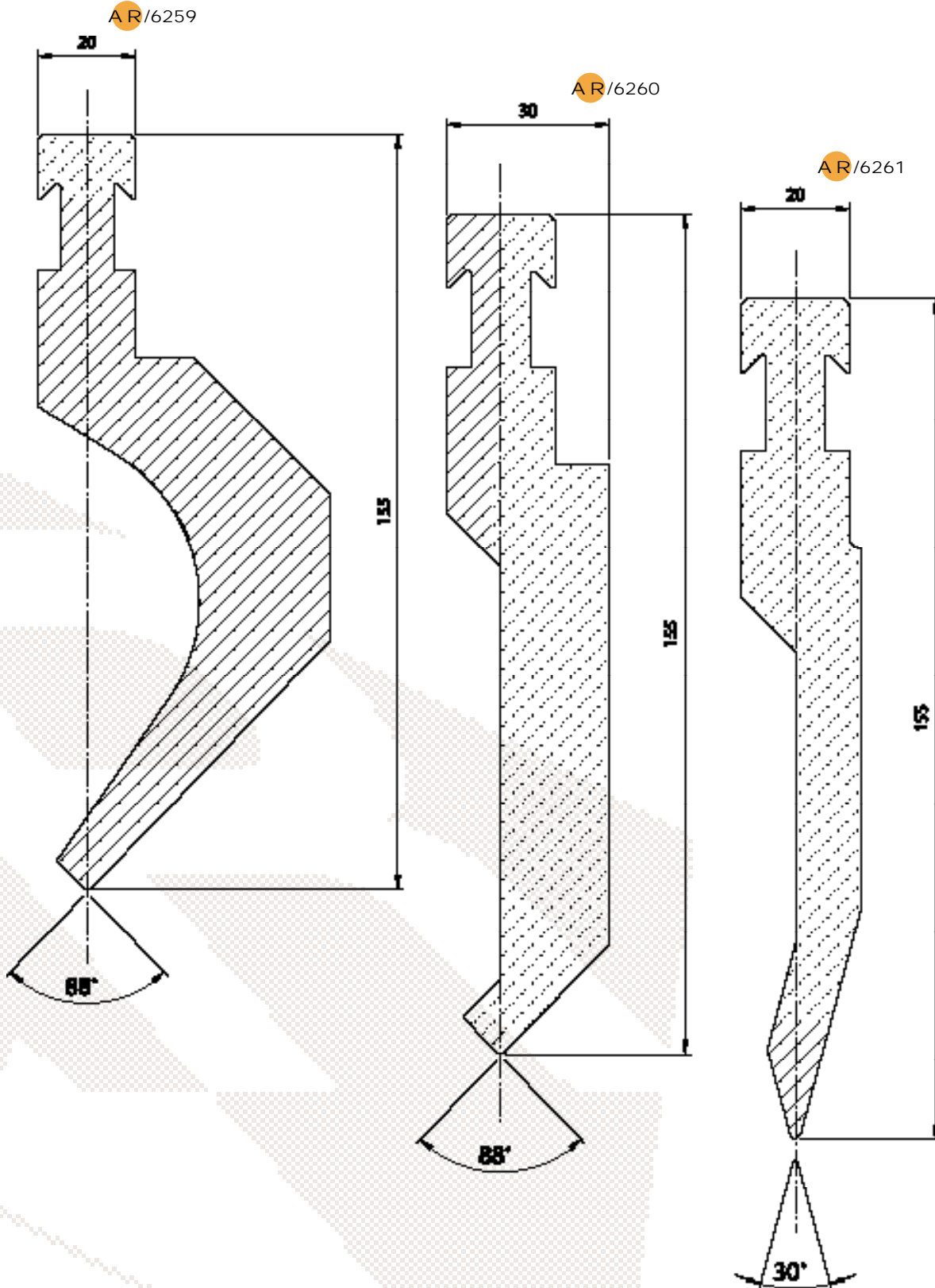
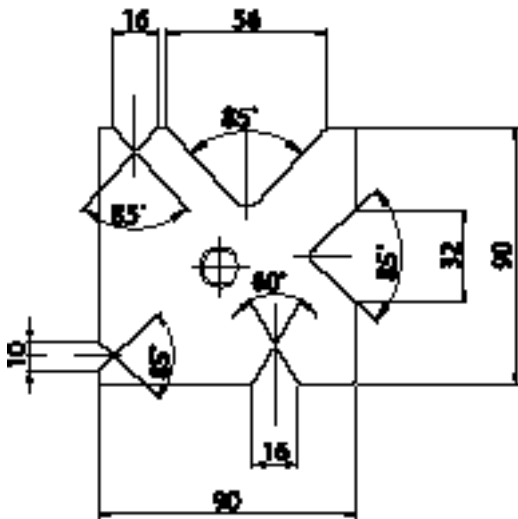




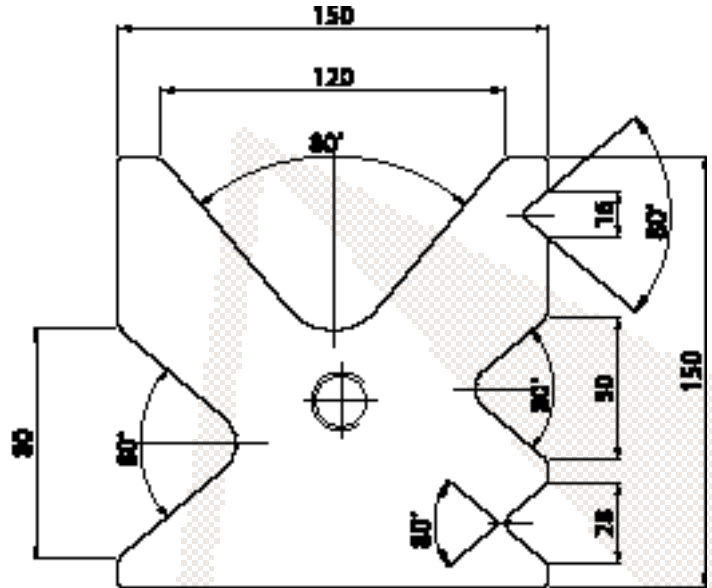
CONTRO "V" A DISEGNO / SPECIAL PUNCHES





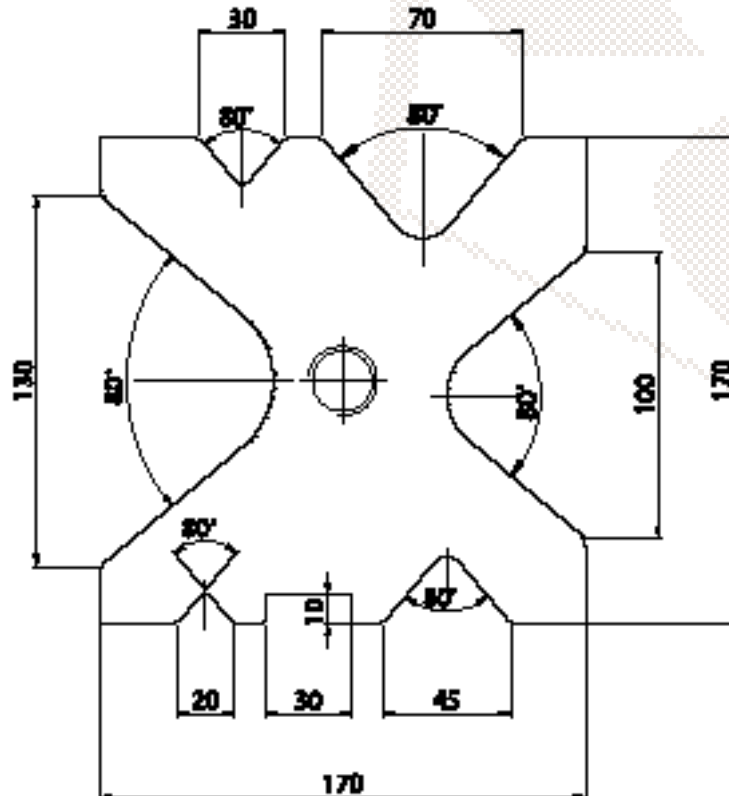


AR/6262



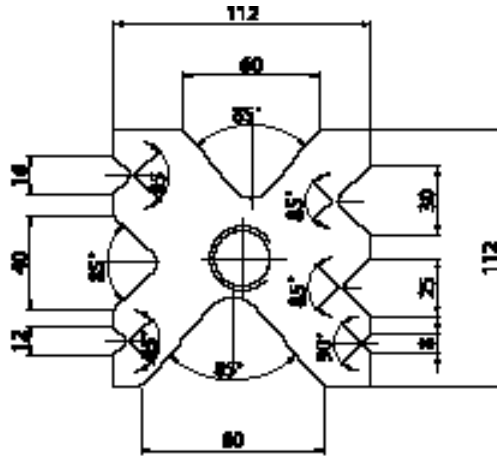
AR/6263

AR/6264

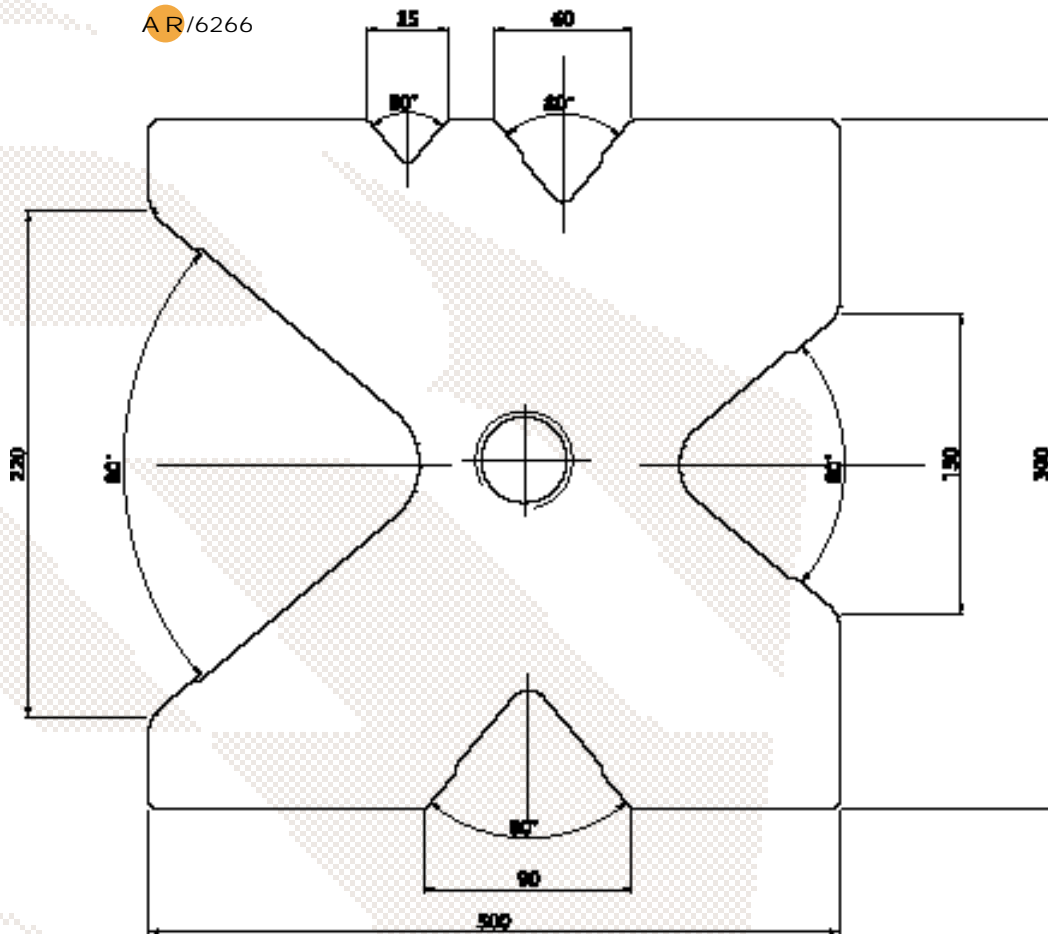




AR/6265



AR/6266

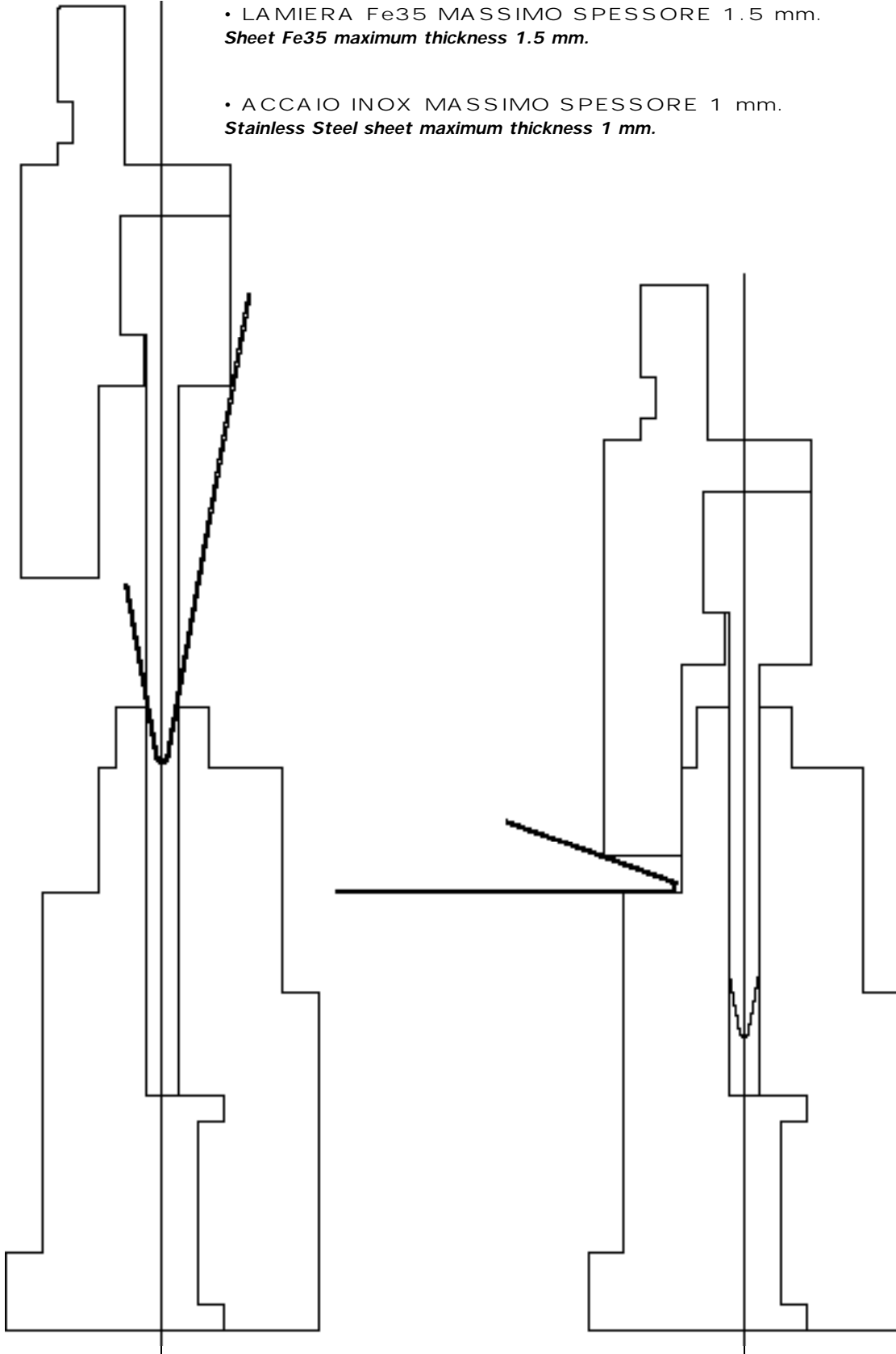




## PIEGA-SCHIACCIA A DISEGNO / *SPECIAL TOOLS*

- LAMIERA Fe35 MASSIMO SPESSORE 1.5 mm.  
*Sheet Fe35 maximum thickness 1.5 mm.*

- ACCAIO INOX MASSIMO SPESSORE 1 mm.  
*Stainless Steel sheet maximum thickness 1 mm.*





La società **ANGELO ROMANI**, avvalendosi dei propri tecnici con pluriennale esperienza di settore, è in grado di progettare e realizzare attrezzature speciali per presse piegatrici in accordo con le particolari esigenze di ogni singolo cliente.

Gli impianti di cui dispone l'azienda permettono di produrre attrezzature con **lunghezza fino a 11 metri**.

Per raggiungere l'obiettivo di fornire un prodotto di alta qualità, l'azienda esige, già dall'acquisto della materia prima, una certificazione che continuerà ad essere integrata durante tutto il ciclo di produzione.

La costruzione di uno stampo speciale, comunque, è sempre subordinata al tipo di lamiera che deve essere piegata ed al suo ritorno elastico.

E' per questo motivo che prima della consegna definitiva, un campione dell'attrezzatura costruita verrà collaudato in collaborazione con il Cliente presso la Sua sede verificando che le esigenze produttive vengano totalmente soddisfatte.

*The Company, **ANGELO ROMANI**, have their own team of highly qualified and skilled Technicians with many years experience in working with all customer requirements on both planning and producing special equipment for press-brake machinery.*

**Lengths of up to 11 mt.** can be manufactured by our skilled Production Team.

*The raw materials that are used in the manufacture of special equipment are of the highest quality and are only purchased from reputable manufacturers and suppliers accompanied by full material analysis certification. As part of our quality assurance the steel analysis certificate is integrated into our production and manufacturing systems.*

*Depending on the type of sheet that requires bending and its spring back our special equipment is produced accordingly and to allow for these factors.*

*Customer satisfaction is paramount at all times and before dispatch we invite them to test a sample and to confirm acceptance of the special equipment produced to our exacting standards.*

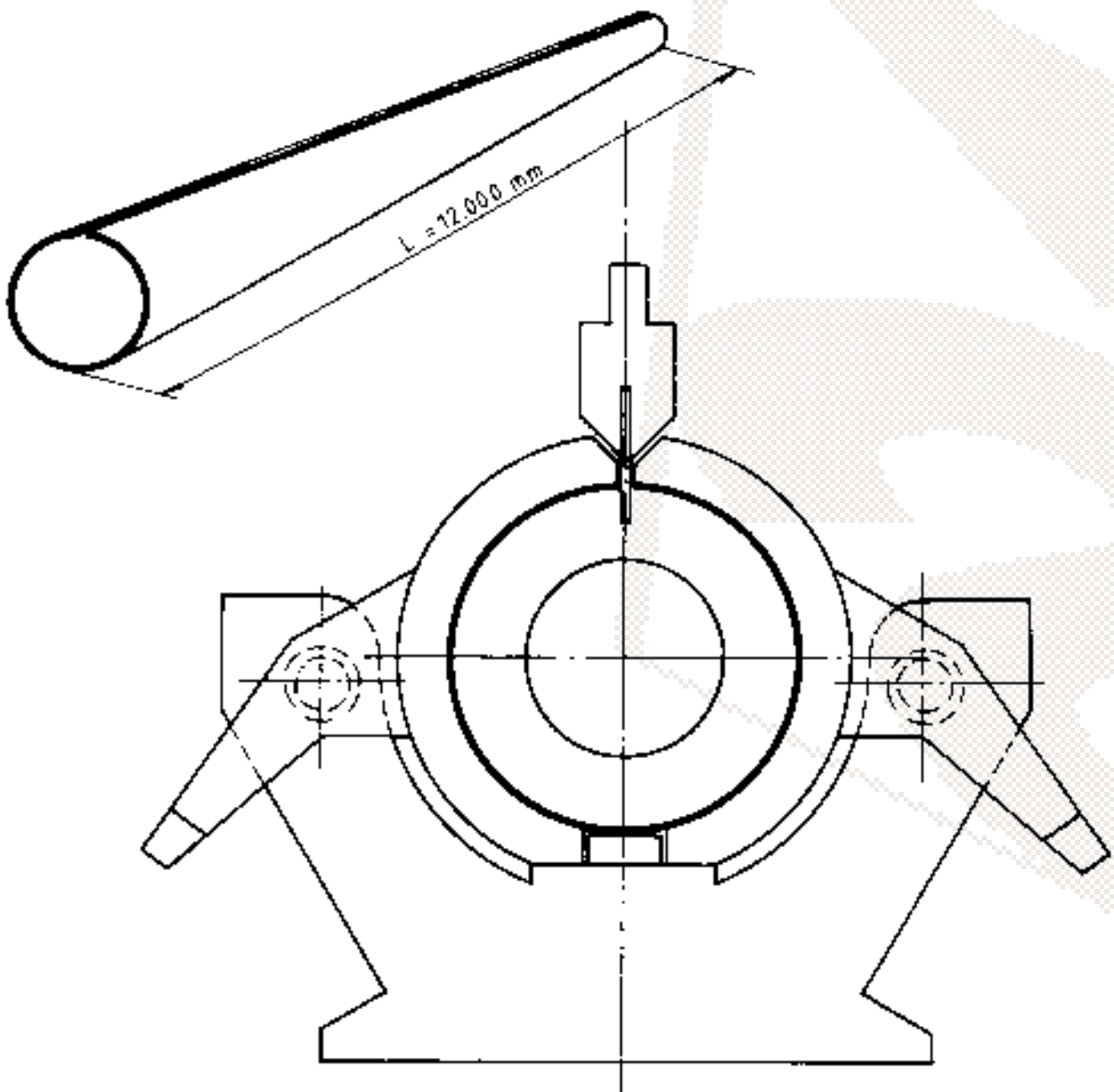


ATTREZZATURE SPECIALI / *SPECIAL EQUIPMENTS*

LAMIERA Fe52  
*Sheet Fe52*

RESISTENZA = 45 - 55 Kg./mm<sup>2</sup>  
*Resistance = 45 - 55 Kg./mm<sup>2</sup>*

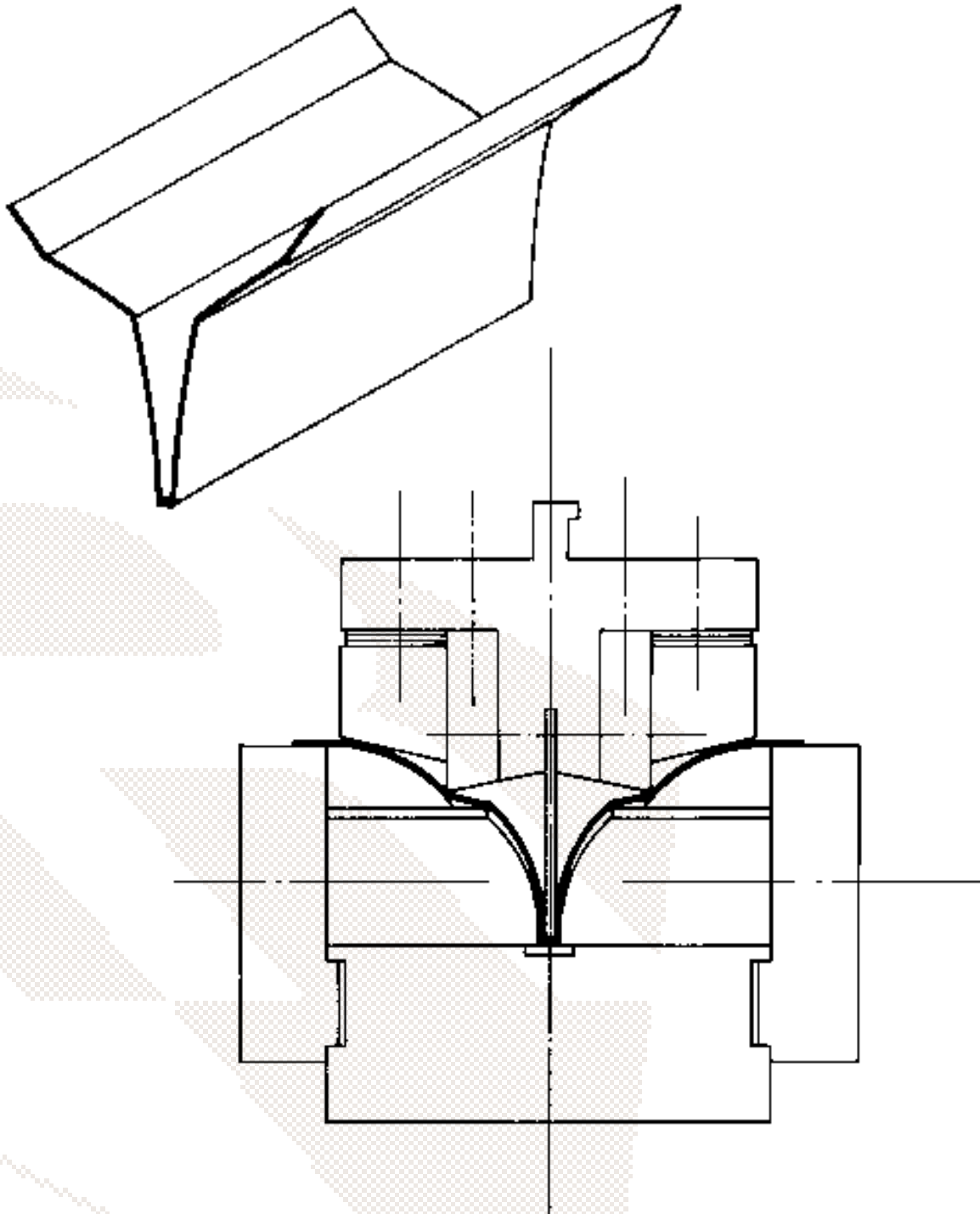
SPESSORE 4,0 - 3,0 mm.  
*Thickness 4,0 - 3,0 mm.*





ALLUMINIO ANODIZZATO  
*Anodized Aluminium*

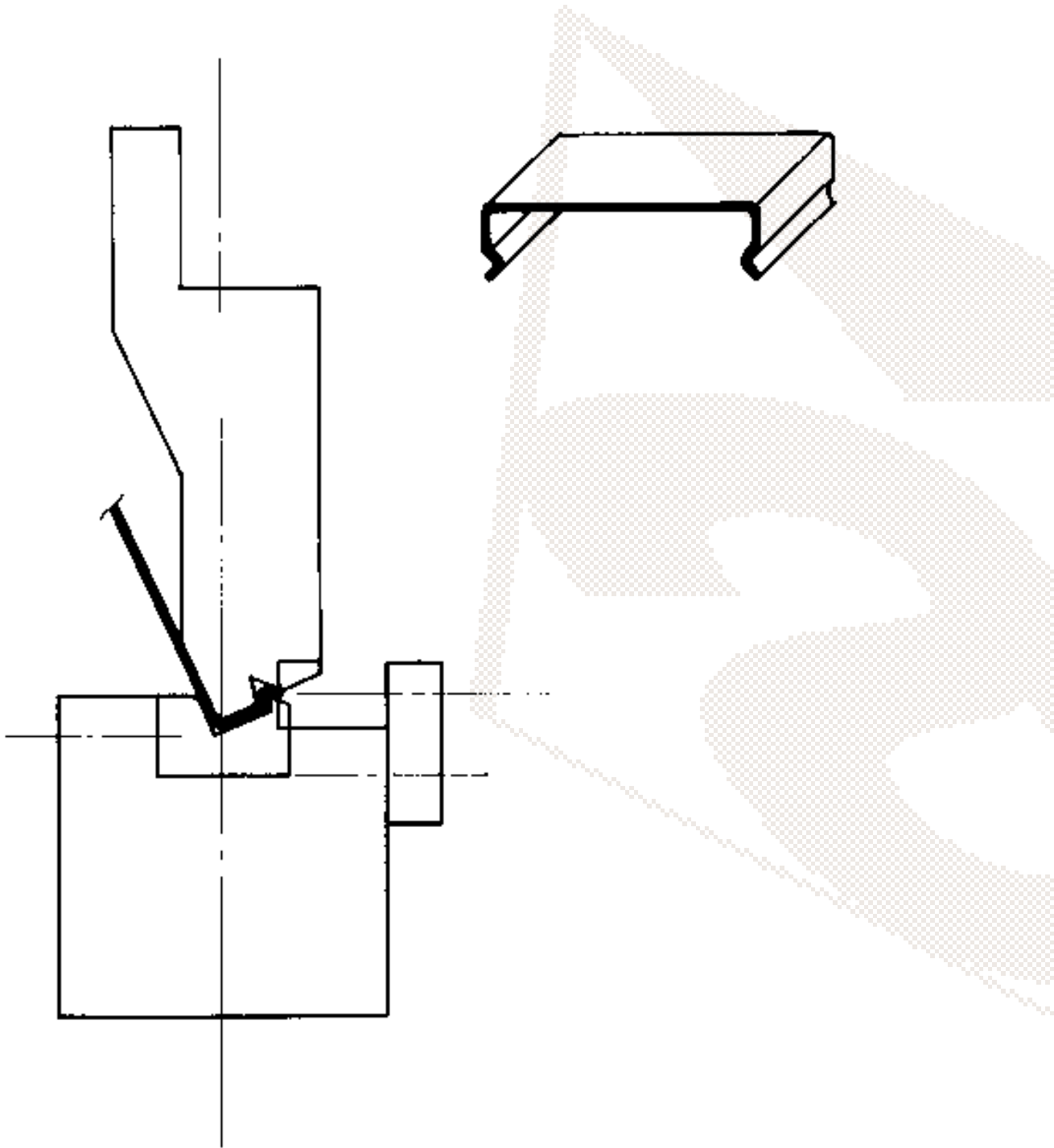
SPESSORE 0,5 mm.  
*Thickness 0,5 mm.*





LAMIERA ZINCATA  
*Galvanized Sheet*

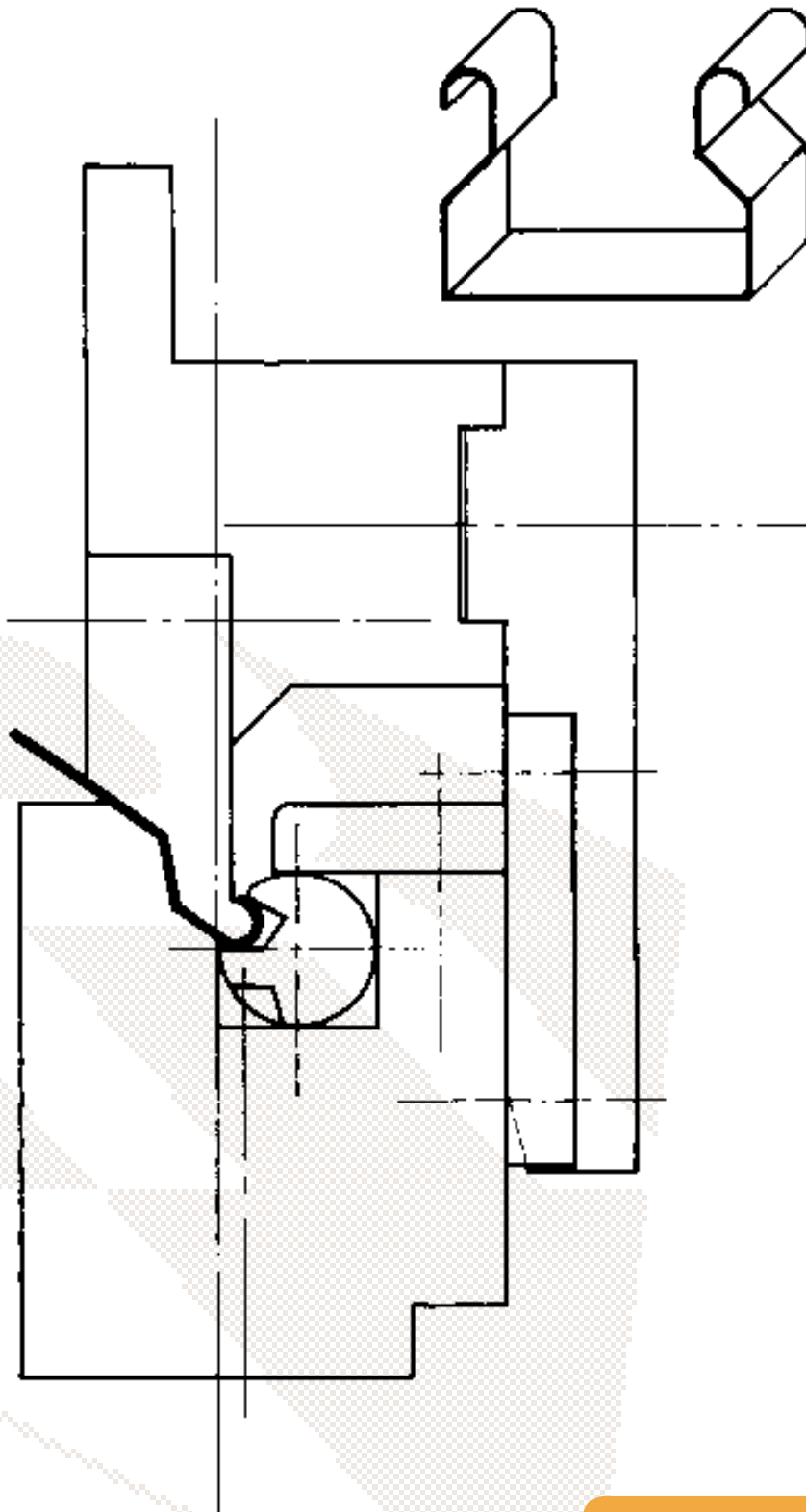
SPESSORE 0,6 - 0,8 - 1 - 1,2 - 1,5 mm.  
*Thickness 0,6 - 0,8 - 1 - 1,2 - 1,5 mm.*





LAMIERA ZINCATA  
*Galvanized Sheet*

SPESSORE 0,6 - 0,8 - 1 - 1,2 - 1,5 mm.  
*Thickness 0,6 - 0,8 - 1 - 1,2 - 1,5 mm.*

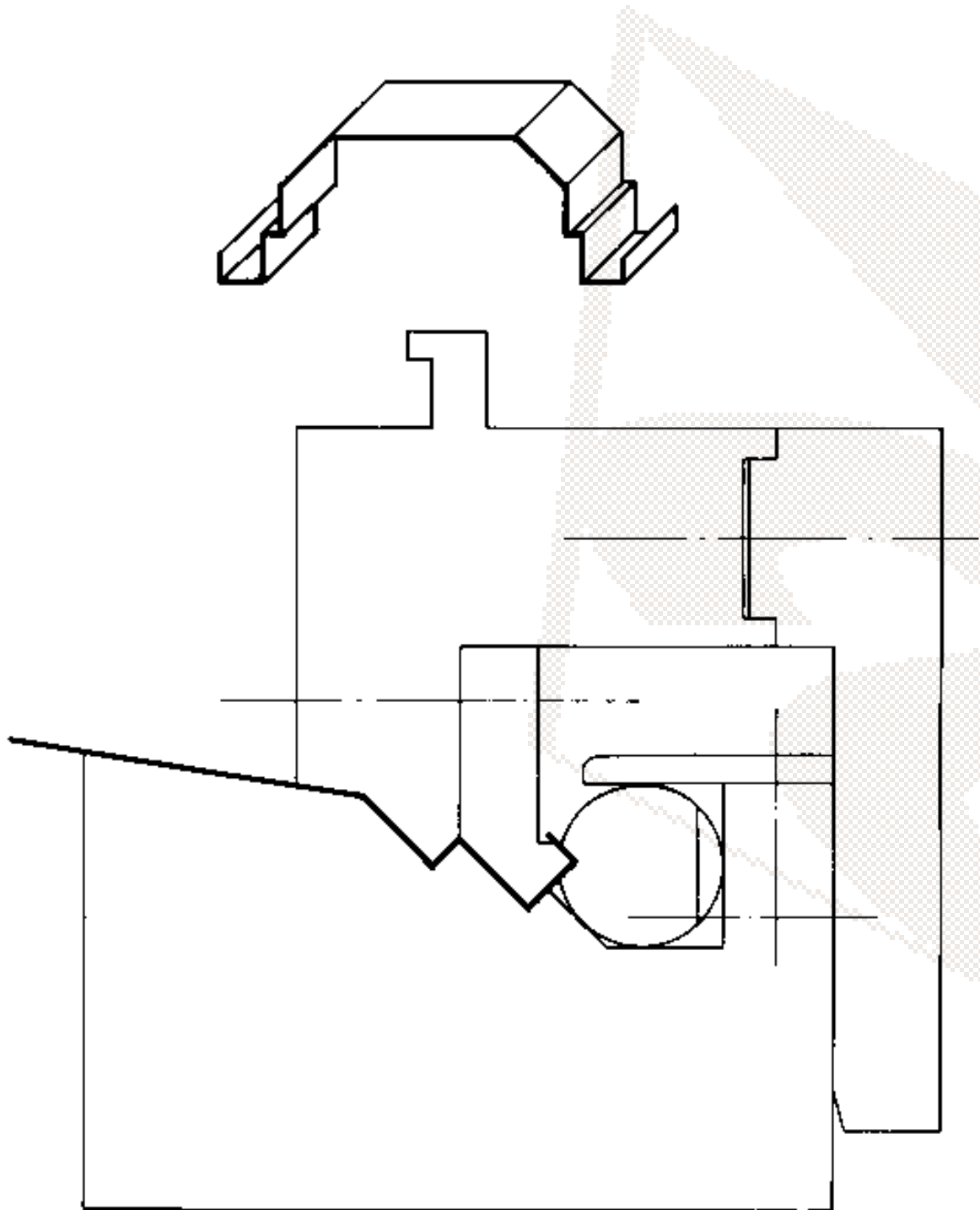




LAMIERA Fe37  
*Sheet Fe37*

RESISTENZA = 40 - 45 Kg./mm<sup>2</sup>  
*Resistance = 40 - 45 Kg./mm<sup>2</sup>*

SPESORE 0,5 - 0,6 mm.  
*Thickness 0,5 - 0,6 mm.*

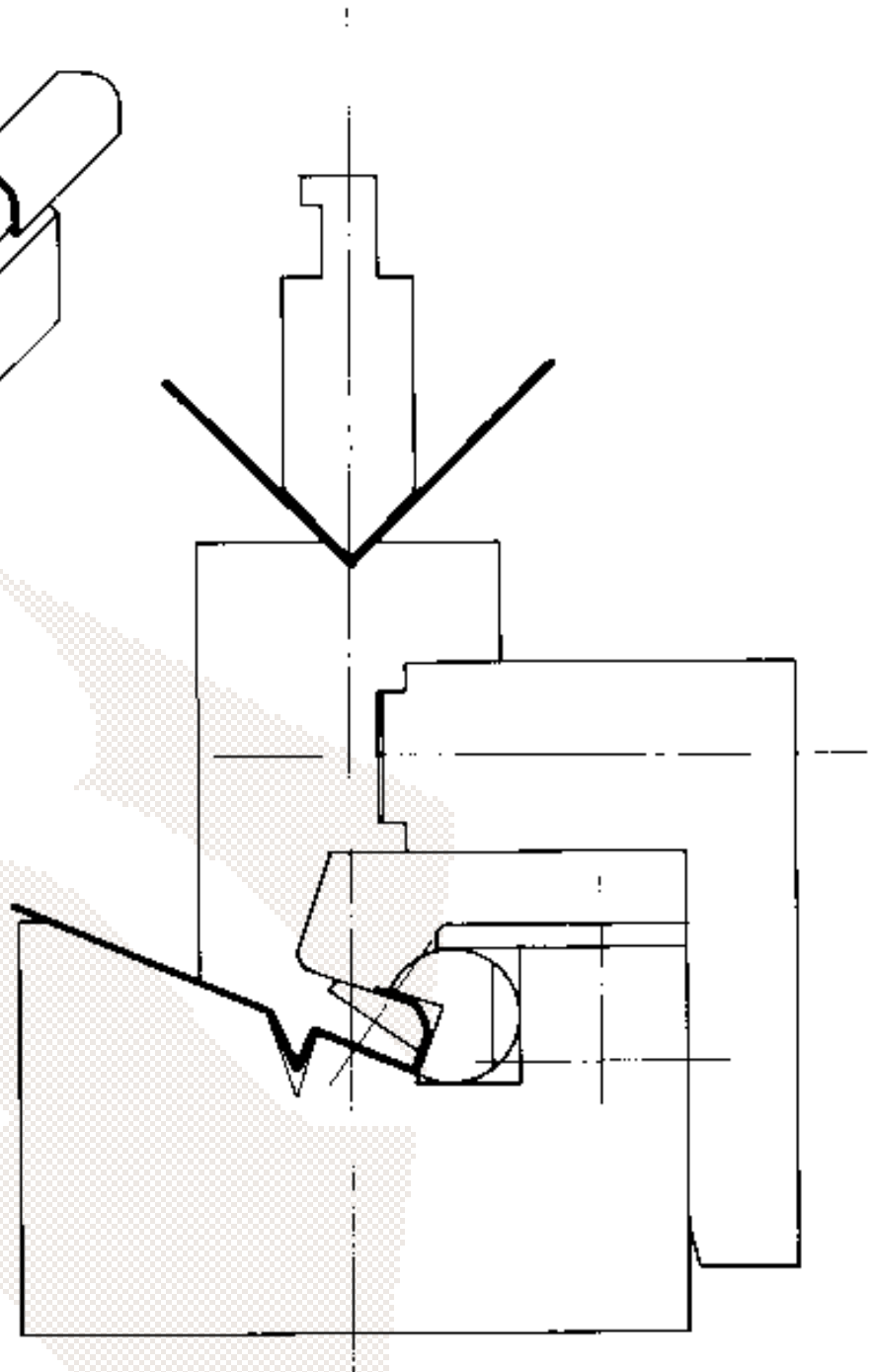
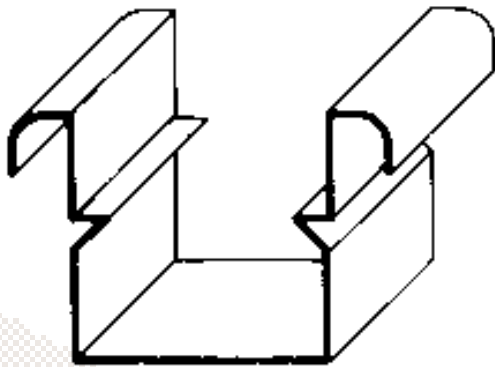




LAMIERA ZINCATA  
*Galvanized Sheet*

RESISTENZA = 45 - 50 Kg./mm<sup>2</sup>  
*Resistance = 45 - 50 Kg./mm<sup>2</sup>*

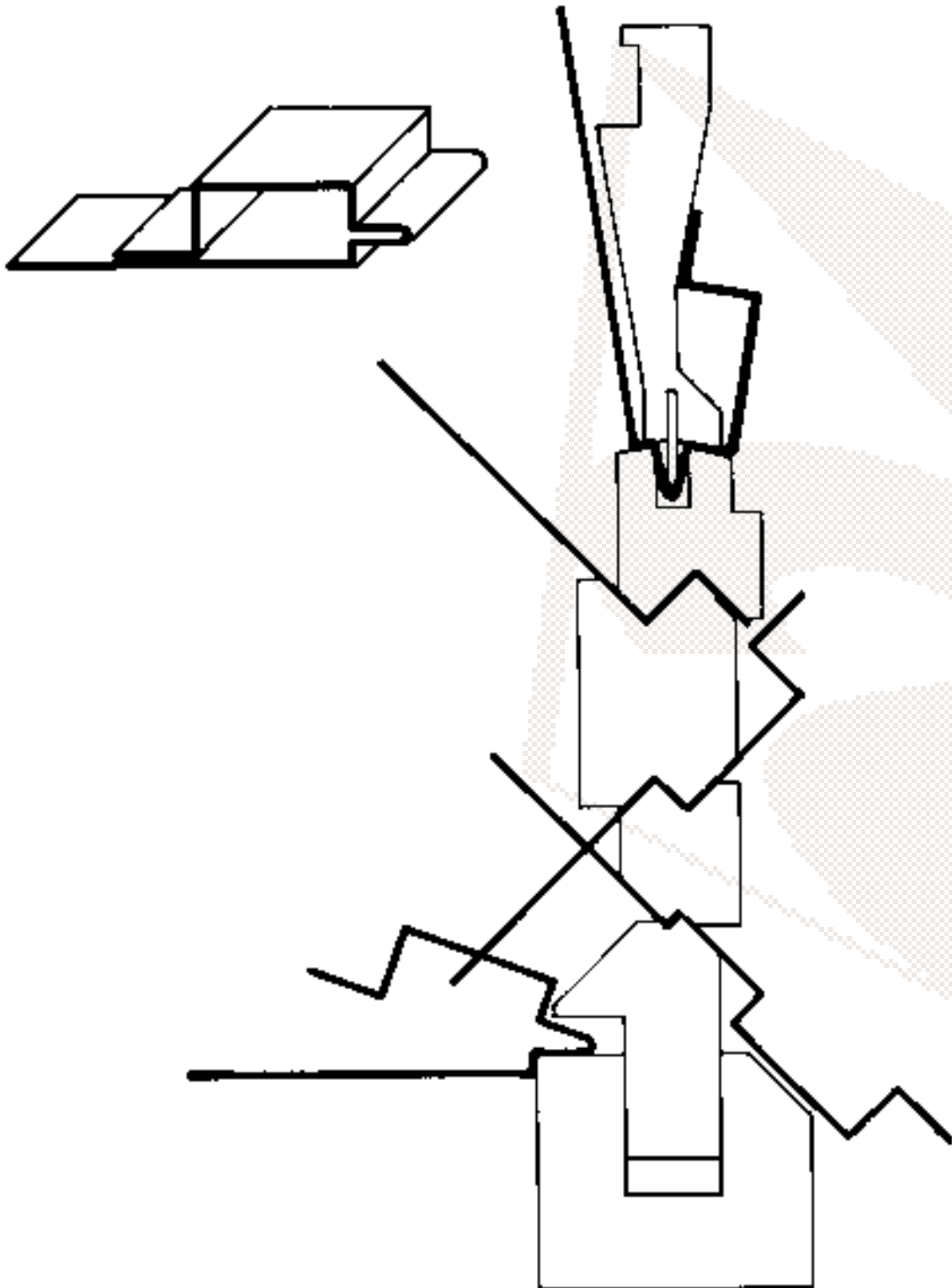
SPESSORE 0,5 - 0,6 mm.  
*Thickness 0,5 - 0,6 mm.*





LAMIERA ZINCATA  
*Galvanized Sheet*

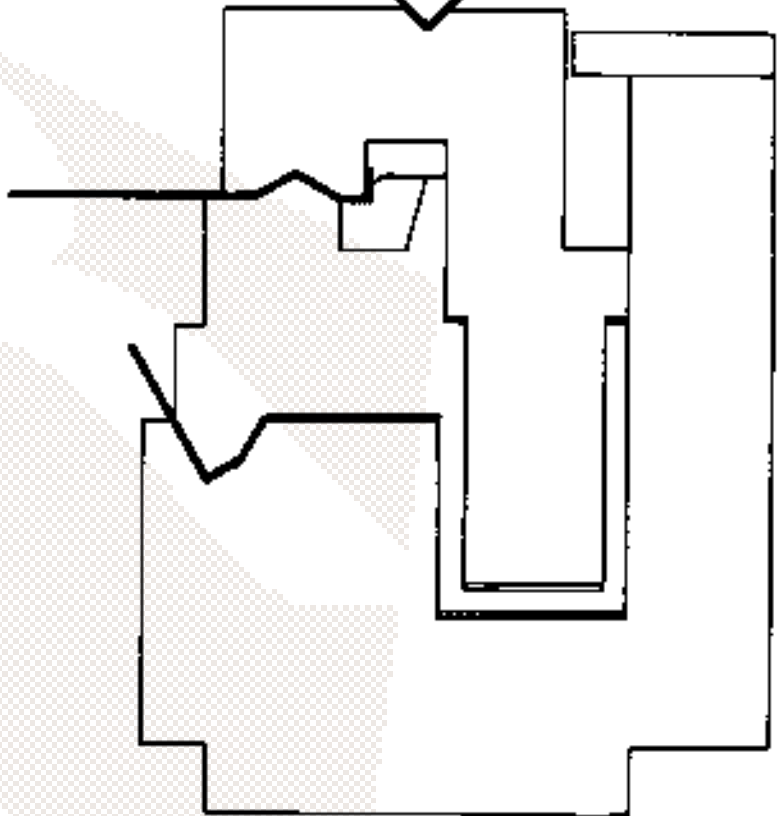
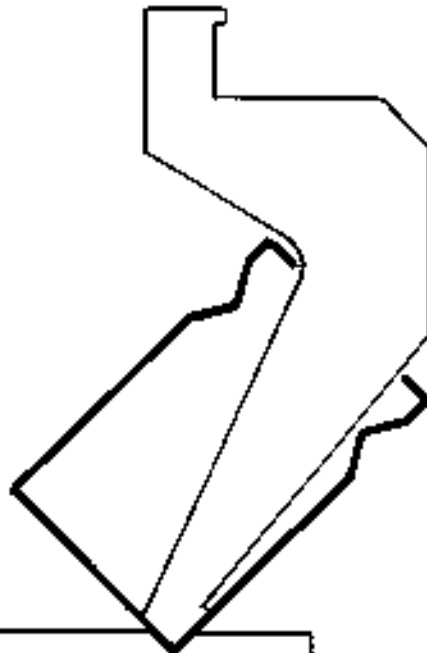
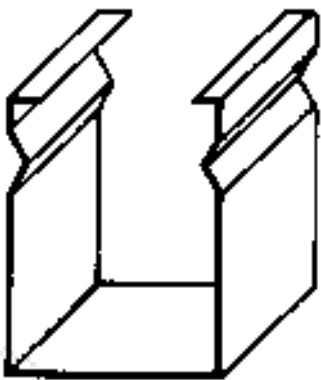
SPESSORE 1 mm.  
*Thickness 1 mm.*





LAMIERA ZINCATA  
*Galvanized Sheet*

SPESSORE 0,8 - 1 mm.  
*Thickness 0,8 - 1 mm.*

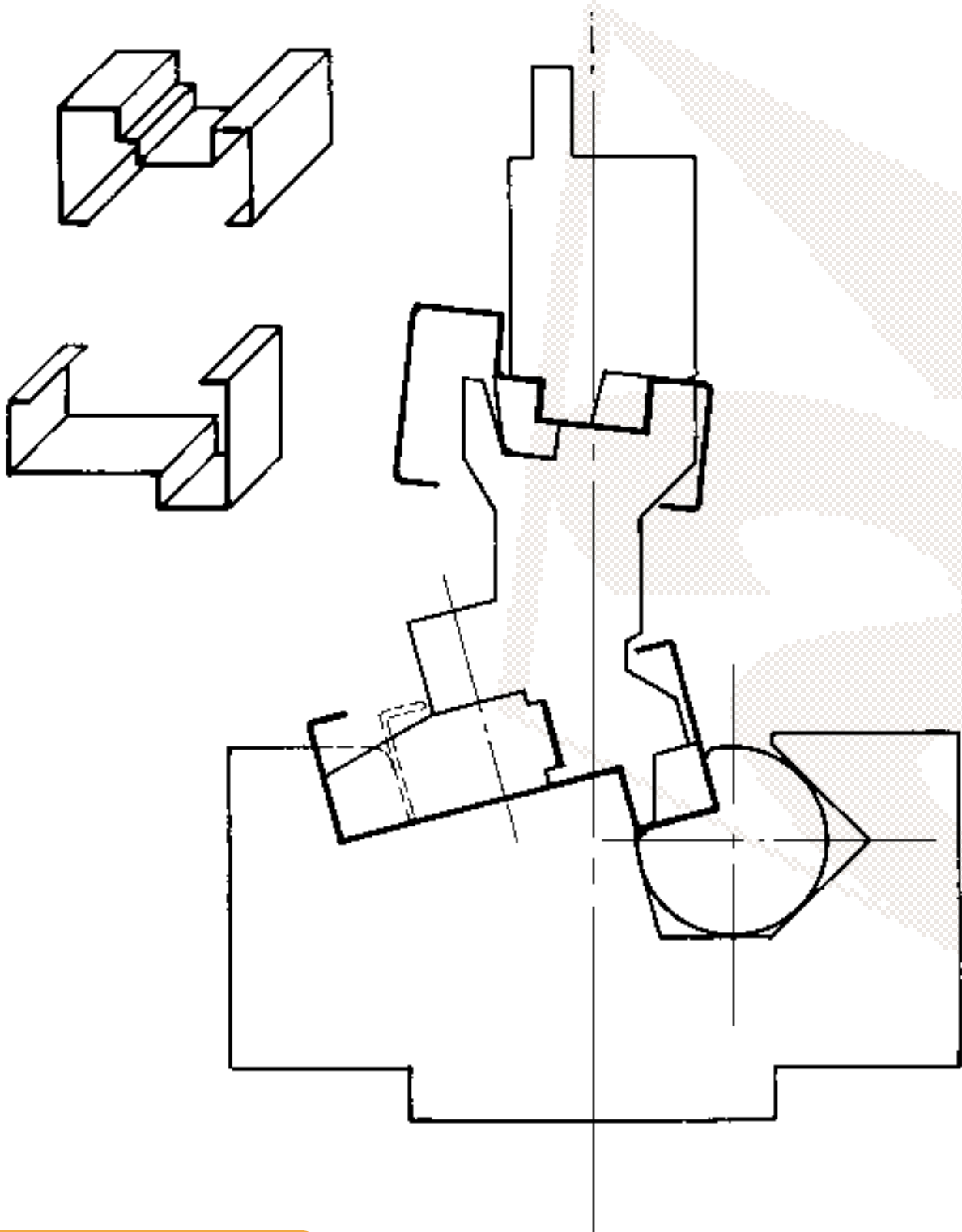




LAMIERA Fe45  
*Sheet Fe45*

RESISTENZA = 40 - 45 Kg./mm<sup>2</sup>  
*Resistance = 40 - 45 Kg./mm<sup>2</sup>*

SPESSORE 2 mm.  
*Thickness 2 mm.*

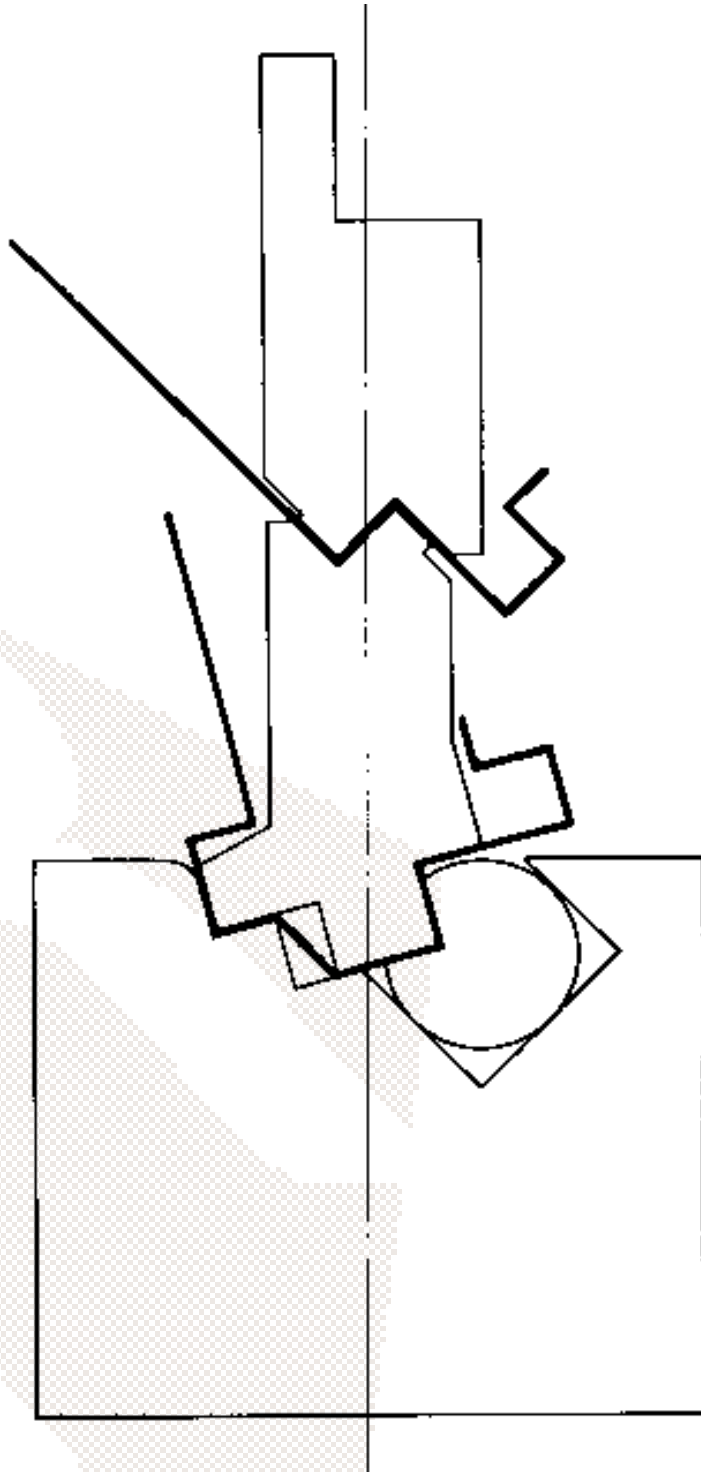
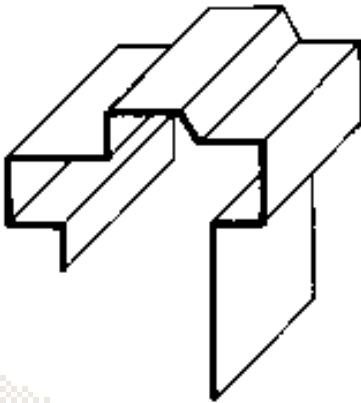




LAMIERA Fe52  
*Sheet Fe52*

RESISTENZA = 45 - 55 Kg./mm<sup>2</sup>  
*Resistance = 45 - 55 Kg./mm<sup>2</sup>*

SPESSORE 2 mm.  
*Thickness 2 mm.*

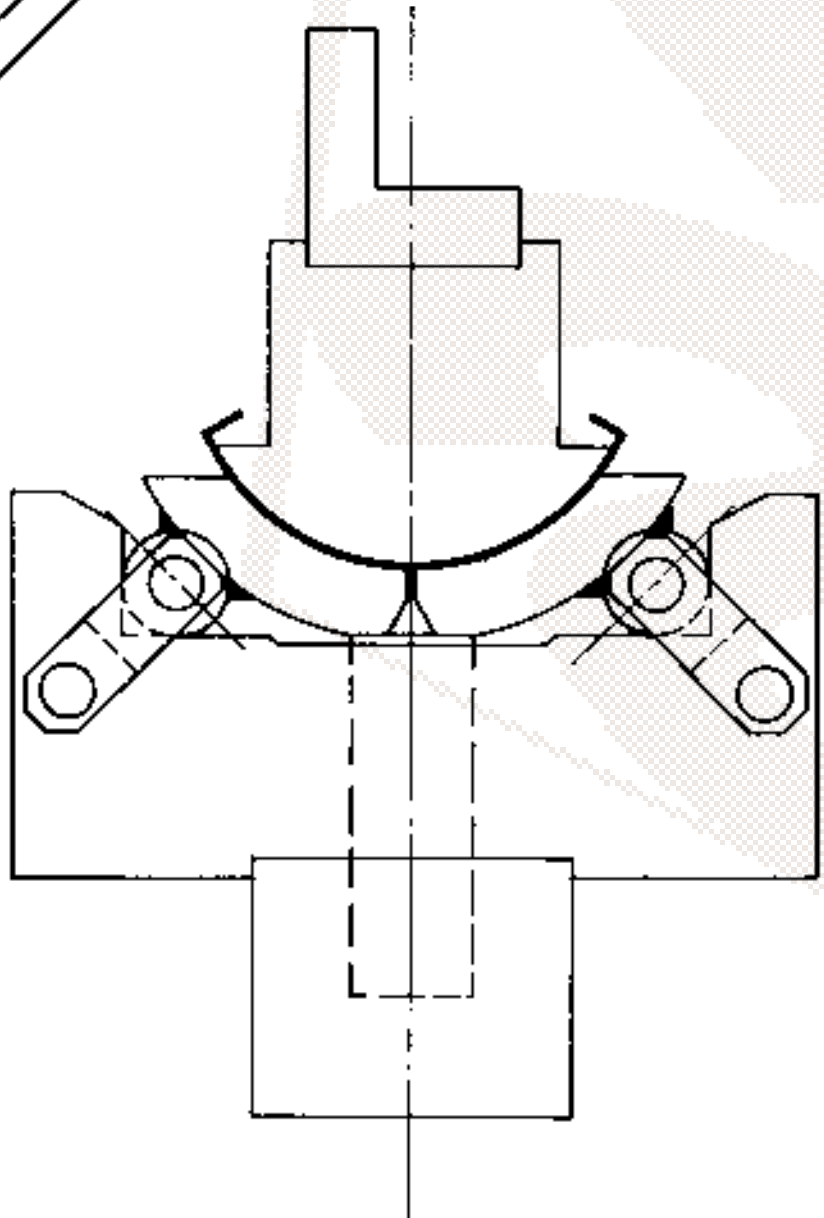
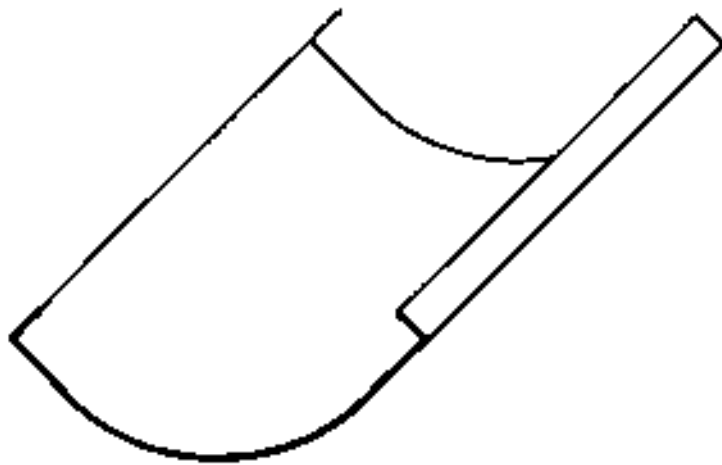




ATTREZZATURE SPECIALI / *SPECIAL EQUIPMENTS*

ACCIAIO INOX SATINATO  
*Glazed Stainless Steel*

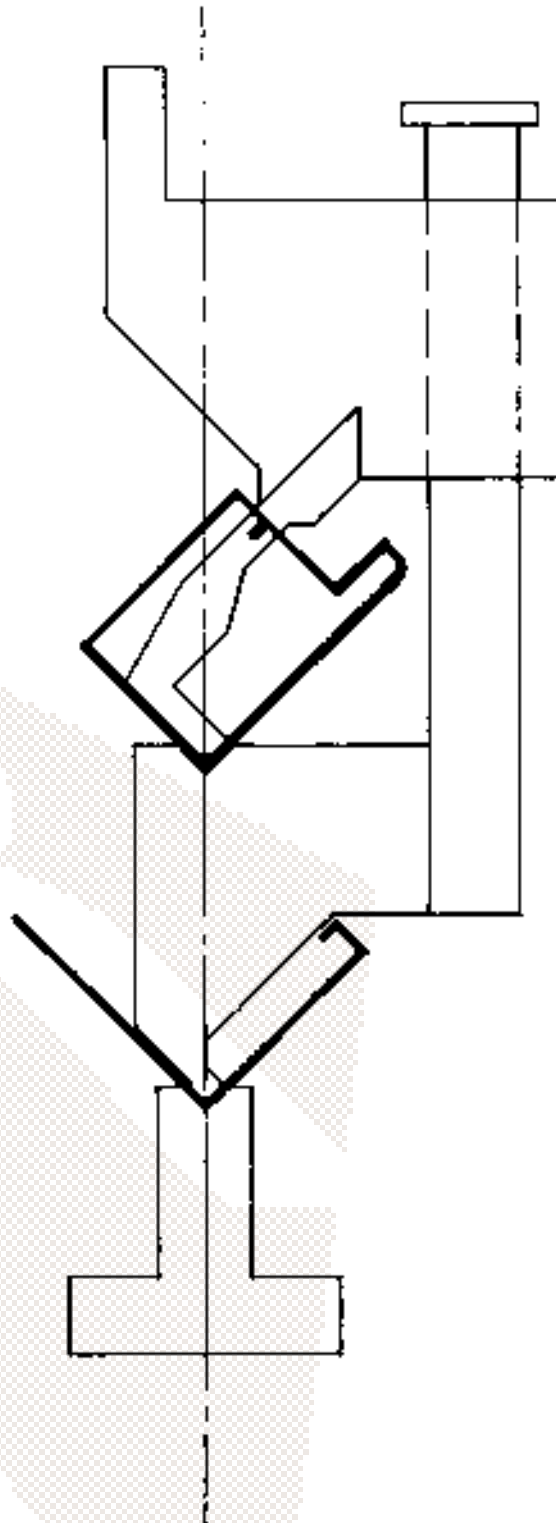
SPESSORE 1 mm.  
*Thickness 1 mm.*





ACCIAIO INOX AISI 304  
*Stainless Steel AISI 304*

SPESSORE 1 mm.  
*Thickness 1 mm.*

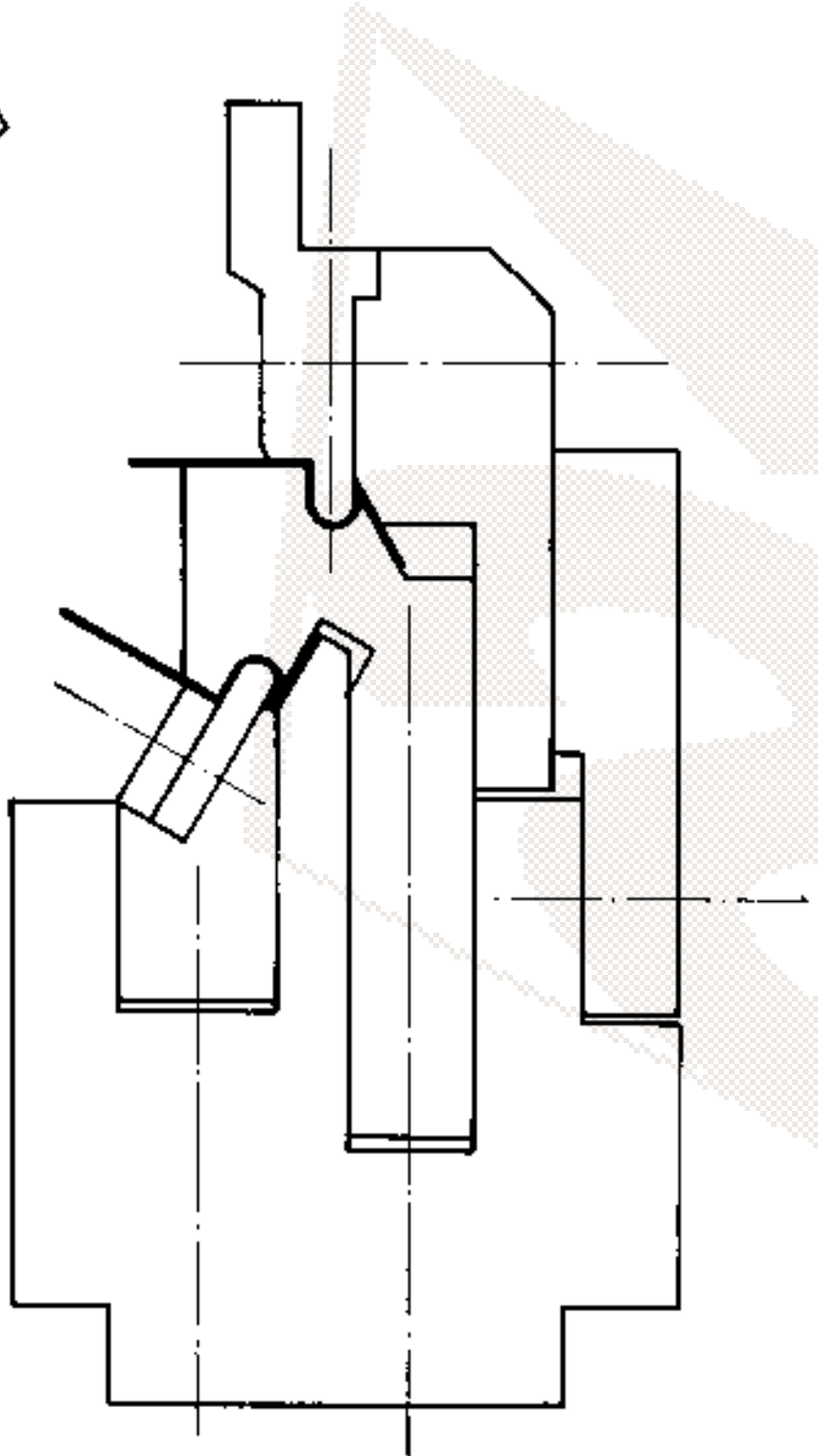
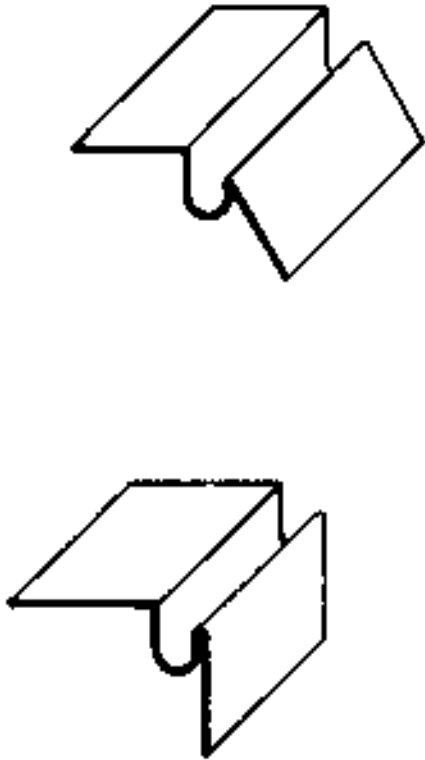




LAMIERA Fe52  
*Sheet Fe52*

RESISTENZA = 45 - 55 Kg./mm<sup>2</sup>  
*Resistance = 45 - 55 Kg./mm<sup>2</sup>*

SPESSORE 1 mm.  
*Thickness 1 mm.*





LAMIERA Fe37  
*Sheet Fe37*

RESISTENZA = 40 - 45 Kg./mm<sup>2</sup>  
*Resistance = 40 - 45 Kg./mm<sup>2</sup>*

SPESSORE 1,5 mm.  
*Thickness 1,5 mm.*

