



Gli intermediari **ROMANI** per presse piegatrici a serraggio meccanico evidenziano le seguenti principali caratteristiche:

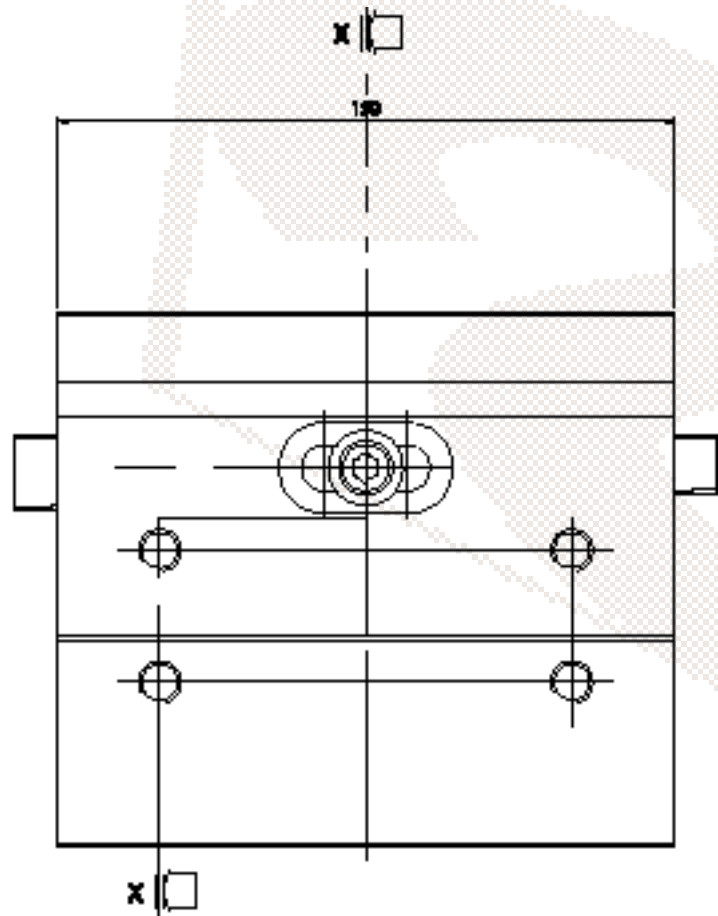
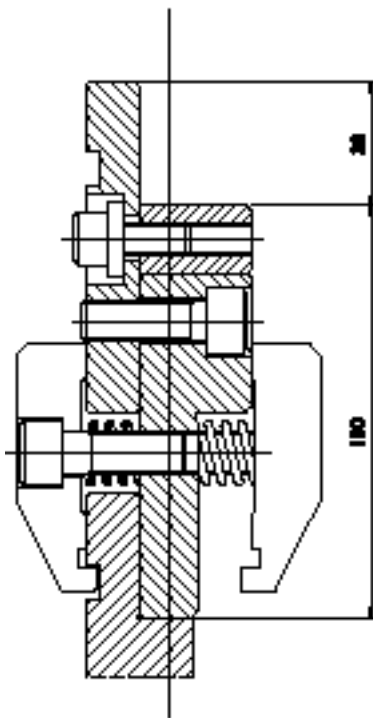
- Completa lavorazione di rettifica su tutte le superfici
- Fornitura di due staffe di sicurezza brunate
- Sbiancatura a zinco
- Materiale C45 bonificato
- Eseguiti a nostro disegno AR/5473
- Dimensioni di ingombro mm. 150x100x40
- Elevata economicità
- Disponibilità immediata a magazzino

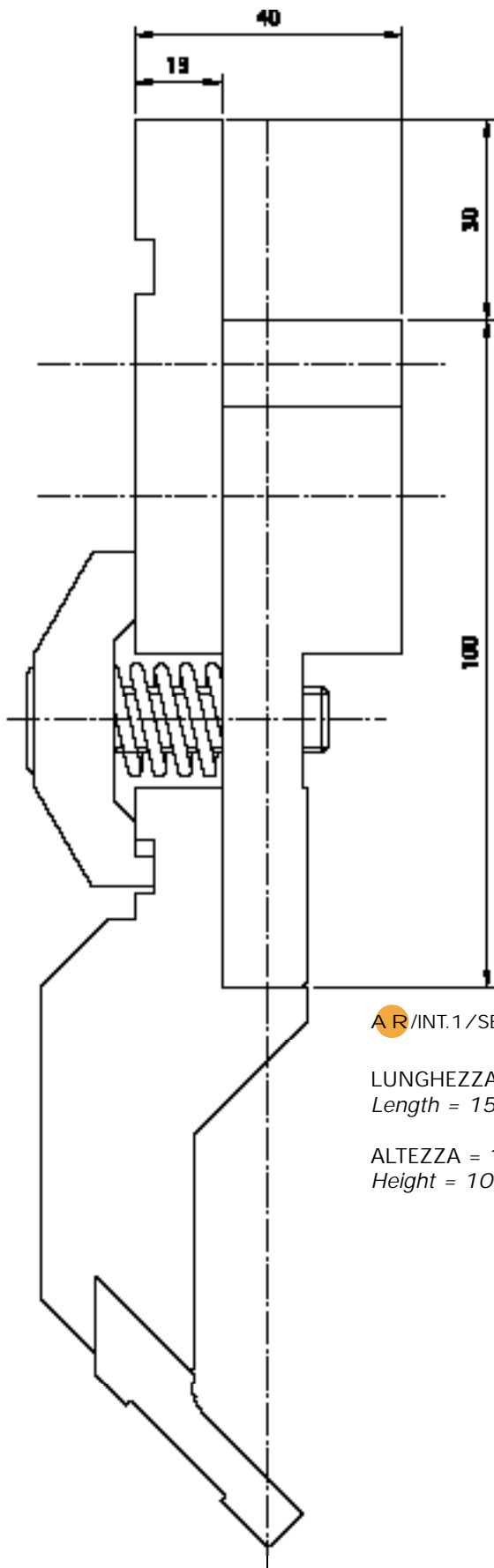
E' possibile inoltre fornire intermediari con bloccaggio a leva, a staffaggio pneumatico ed a disegno cliente

**ROMANI** press brakes tooling clamping elements point out the following main features:

- All ground surfaces
- Two burnished safety stirrups supply
- Galvanizing Treatment
- Steel W 1.1191 hardened and tempered
- Made according with our drawing AR/5473
- Overall dimensions mm. 150x100x40
- Very economical price
- Immediate stock availability

Besides is possible to supply pneumatical and mechanical lever clamping elements and according with customer drawing.

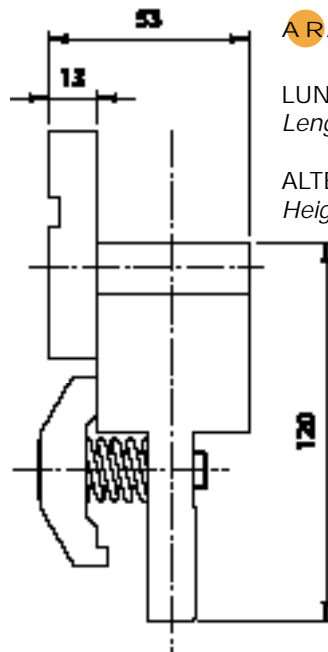




AR/INT.1/SECURITY

LUNGHEZZA = 150 mm.  
Length = 150 mm.

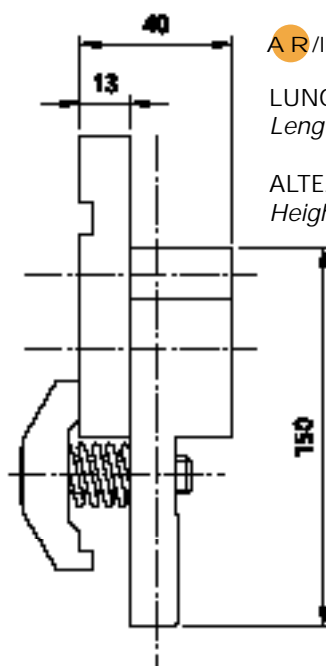
ALTEZZA = 100 mm.  
Height = 100 mm.



AR/INT.1/SEC/120

LUNGHEZZA = 150 mm.  
Length = 150 mm.

ALTEZZA = 120 mm.  
Height = 120 mm.



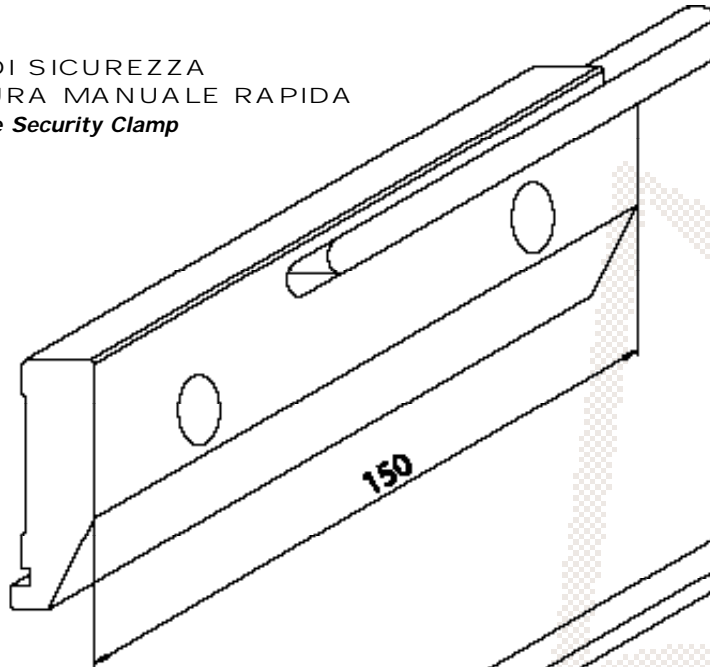
AR/INT.1/SECURITY TALL

LUNGHEZZA = 150 mm.  
Length = 150 mm.

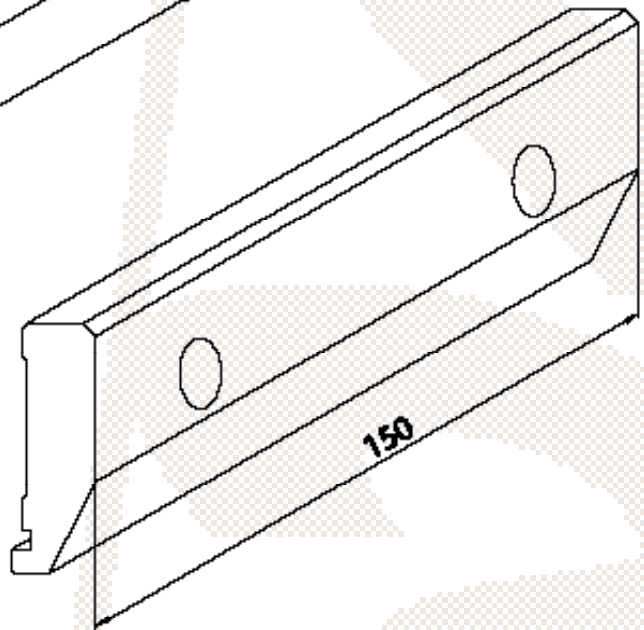
ALTEZZA = 150 mm.  
Height = 150 mm.



STAFFA DI SICUREZZA  
A CHIUSURA MANUALE RAPIDA  
*Quick Release Security Clamp*



STAFFA DI SICUREZZA  
*Security Clamp*



STAFFA STANDARD  
*Standard Clamp*

